



Iranconex
Industrial
Group





The largest provider of major construction projects
in the country
Residential, Leisure, Touristic and Workshop Camps

Caretaker Guard Kiosks

Engineering Administrative Conex

Caverns and Mobile Houses

Toilets and Bathrooms

Villas and Prefabricated Houses

Shop and Portable

Victory and Happiness Are For You

Our Thoughts Are Your Tranquility



One Year Warranty and after-sales services



Iranconex is the first and only Conex manufacturer in Iran with a valid certificate and three certificates
ISO 9001:2008
Integrated Management of IMS and National Standard of Iran

Success happens twice

First in the mind, then in reality



Iranconex Industrial Group has entered the country's production field simultaneously after registering in 2006 and with valuable experience gained from the past in various projects, decided to produce high-quality products that were implemented by implementing various projects with large private government offices and companies, refineries and sites, and with the help of distinguished graduates and graduates in the architecture and civil sector as well as benefiting The technology of the day has succeeded in obtaining certificate from KALITEST. The company has always tried to improve the quality of its products and has tried to produce high quality products.

The main objective and main focus of the managers and employees of Iranconex Industrial Group is on customer orientation.

Iranconex Industrial Group manufactures all kinds of guard, residence, caravan, prefabricated buildings, conference halls, one-floor and two-floor confinements with the lowest possible cost and time as well as recycling, ready to cooperate with construction and construction companies. Iranconex Company is proud to use the scientific knowledge of the day and technical force with experienced drummer to design and manufacture different types of earthquake resistant containers with different applications and desirable quality in the field of industry and civil works of the country. The company produces its products by establishing an integrated management system IMS (International Quality Management Standard: 1809001:2008- OHSAS18001:2007 and Environmental Management ISO14001:2007) and is ready to the general consumers in the country's civil and development line.

The company is committed to improving the quality of its products and has always tried to produce high quality products.



Our Credibility is Your Trust

Letter of Faith

- 1-Faith in God and the three principles of kindness, honesty and kindness towards fellow human beings
- 2-We do things according to conscience, fairness and fairness and knowledge.
- 3-We strive to have a dynamic and up-to-date collection and to better respond to customers.
- 4-Providing the best services for customers as the main goal and finally appreciating them as the main pillars of the company's growth and excellence
- 5-We do things according to the time and promise we make so that we can be proud of God's mercy and our dear customers.
- 6-We try to master the work and do it properly, even without supervising it, because we believe that falling short will ultimately come back to us.
- 7-We pay attention to our discipline, service, and work because we believe that order acts like a minister and a servant. Correct and fast doing the assigned tasks except your duty and considering the cost of time in the shortest possible time, we will comply with the customer's requirements according to the rules.

Construction Steps

- 1-The design is defined in the first phase of the design and plans and the details of the implementation are determined.
- 2-Designing the skeleton of the entire structures is designed by special software and its file is ready to be produced.
- 3-The machine produces each piece of each panel separately and carves its specifications and position on it to avoid any errors during assembly.
- 4-The individual parts of each member are produced according to its position in the panel with special specifications such as cutting length and required punches.
- 5-The assembly stage is usually done at the factory site after the production of the parts.
- 6-Transportation Completed panels are transported to the construction site
- 7-Fabrication of the skeleton after the evacuation of the panels in the desired location for quick installation and then installed in their place easily and at high speed
- 8-After the installation of the skeleton is finished, the installations and other items are carried out by the appropriate and consistent materials of the work



Anywhere With any user



Features

Construction and construction operations in our country are expanding day by day. One of the major problems of the building and industrial companies is the equipping of the workshop and construction of a camp for their engineers and workers. Iranconex Co. is able to produce workshop, engineering and residential camps with different designs in the shortest time using light structures technology. The materials used in construction camps by Iranconex Company are technically and qualitatively superior to traditional materials and are very economical and easily removable or reused.

Construction speed and conducive with all weather conditions and has economic justification against destructive forces of natural (Wind, earthquake...) Portable in impassable areas.

Iranconex structures made with special materials

Compatible with all weather conditions and earthquake proof



Powerful in production and in sync with you at any moment

Technical specifications and implementation facilities Iranconex products

All products of Iranconex, including security canopies and office canopies Engineering and accommodation, caravan services, Bathroom sanitary ware and prefabricated houses are designed and built from the best raw materials and with the following technical specifications and facilities.

Technical Specifications

Skeleton: Heavy steel profile of Saveh in sections (40x40), (60x40) and (80x40).

Metal frame joints: continuous welding at several points with ama electrodes

Rustproof: 40 microns thick to prevent corrosion

Body: colored galvanized sheet with the shape of Mobarakeh steel

Roof: galvanized, Shadeline design, terracotta shutters with oven color

Body connections: 21 and 25 grade rivets with 5 cm intervals, steel screws with rubber sealing gaskets for durability and long life.

Floor bridging: about half a meter and width of bridges (40 x 40) by Saveh factory

Floor: Multi-layered 16 mil thick board and MDF and waterproof with LG and Sanat Isfahan flooring

Insulation: 4 cm type F polystyrene insulation (fireproof) or 4 cm Eds or 4 cm non-refractory external materials with high density and resistant to heat, cold and waterproof according to the international standard calculation table and using 2 cm polyethylene foam without Bubble 2 layers.

Door and window: heavy colored aluminum, Arak furnace epoxy, with installation of water-proof fiberglass gutters. Electrical wiring and channeling inside the duct 2 to 4 cm.

Lighting: Fluorescent or moonlight of low-consumption grade 1 Iranian design (crystal, if ordered, install chandeliers or low-consumption lights, install switches and sockets and electricity and telephone of grade 1 type.

Facilities: hot and cold-water piping and faucets equipped with new systems inside the condo

Decorations: All products are equipped with fiberglass awnings and gutters, and for greater strength and beauty, fiberglass waterproof frames are installed on the frames of all structures.

Project construction and equipment

Phase 13 residence of Assaluyeh, Payandan company

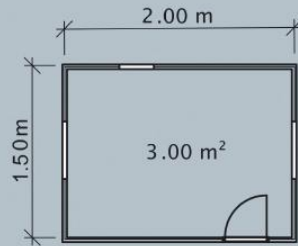
This project was built on a land of 80 hectares with 102 residential condos with an approximate area of 6120 square meters in 2013 by the order of Payandan Company located in Asalouye Phase 13 of Rajab by the designers and engineers of Iran Industrial Group and is ready for operation.

Victory is ours

We can improve the country



6



Honesty in production

Dimensions

- 1.2 * 1.2
- 1.5 * 1.2
- 1.5 * 1.5
- 2 * 1.5
- 2 * 2
- 1.5 * 2
- 2.5 * 2.5
- 3 * 2
- 3 * 3
- 3 * 2.5
- 4 * 2
- 4 * 3

Caretaker Guard Kiosks

Aramesh plan 1:

- It has a door with dimensions of 80 x 186 cm
- Two, three or four windows of 181 meters above, along with the protection and curtains of the fire extinguisher
- The inner cover of the body and roof is made of waterproof PVC material
- The possibility of installing metal protection for window and cooler doors

Aramesh plan 2:

- It has a door with dimensions of 80 x 186 cm
- Two, three or four windows, 181 meters and above
- The inner cover of the body and roof is made of waterproof PVC material



You can be seen from anywhere

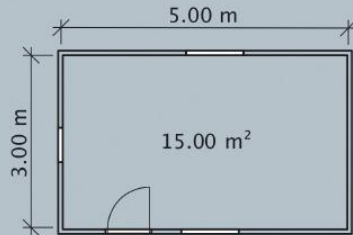


The pride of the Iran and Iranians

Our ability is your tranquility



15



Dimensions

4*2.5
5*2
5*2.5
6*2.5
8*2.5
10*2.5
12*2.5
13*2.5
4*3
5*3
6*3
8*3
10*3
12*3
13*3

Engineering Administrative Conex

Aramesh plan 1:

- It has a door with dimensions of 80 x 186 cm
- Two, three or four windows of 181 meters above, along with Lordrape curtains and guards.
- The inner cover of the body and roof is made of waterproof PVC material
- The possibility of installing metal protection for window and cooler doors

Aramesh plan 2:

- It has a door with dimensions of 80 x 186 cm
- Two, three or four windows 181 meters and above
- The inner cover of the body and roof is made of waterproof PVC material

The possibility of separating the room within 2.5 and 3 meters for both plans

Bathroom Equipment:

- Waterproof, anti-scratch and unbreakable ceramic floor with a new toilet bowl.
- Toilet walls made of waterproof PVC
- The service door is made of heavy aluminum Arak and furnace epoxy
- Hot and cold-water piping, lever valves and all steel mesh hose
- Kenji pedestal vanity with net for placing soup, and mirror
- Electric fan

Kitchen Appliances:

- Open one to two meters
- First class sink and cabinet
- Hot and cold piping and lever valves for cabinet drains
- Net for placing dishes
- Dishwashing liquid container

Other Equipment:

If you need interior decoration, we will announce our readiness with equipment such as bed, library, wardrobe, table and chair.

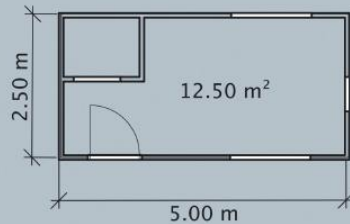
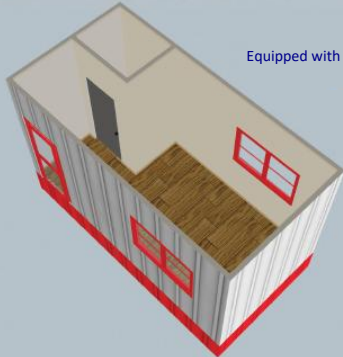


Be at the service of the country every moment

In any use in every place in Iran



Equipped with axle, harness, reinforced chassis, mud guard, sliding and beamed stairs.



Dimensions

4*2.5
5*2
5*2.5
6*2.5
8*2.5
10*2.5
12*2.5
13*2.5
4*3

Caravans and mobile homes

Aramesh plan 1:

- It has a door with dimensions of 80 x 186 cm
- Two, three or four windows of 11 meters and above, along with Lordrape curtains and guards.
- The inner cover of the body and roof is made of waterproof PVC material
- The possibility of installing metal protection for window and cooler doors

Aramesh plan 2:

- It has a door with dimensions of 80 x 186 cm
- Two, three or four windows, 181 meters and above
- The inner cover of the body and roof is made of waterproof PVC material

- The possibility of separating the room within 2.5 and 3 meters for both plans

Bathroom equipment:

- Anti-scratch and unbreakable waterproof ceramic floor with new toilet bowl
- Toilet walls made of waterproof PVC
- The service door is made of heavy aluminum Arak and furnace epoxy
- Hot and cold-water piping, lever valves and all steel mesh hose
- Kenji pedestal vanity with net placing soupe, and mirror
- Electric fan

Kitchen appliances:

- Open one to two meters
- First class sink and cabinet
- Hot and cold piping and lever valves
- Mesh cabinet drainer for placing dishes
- Dishwashing liquid container

Other equipment:

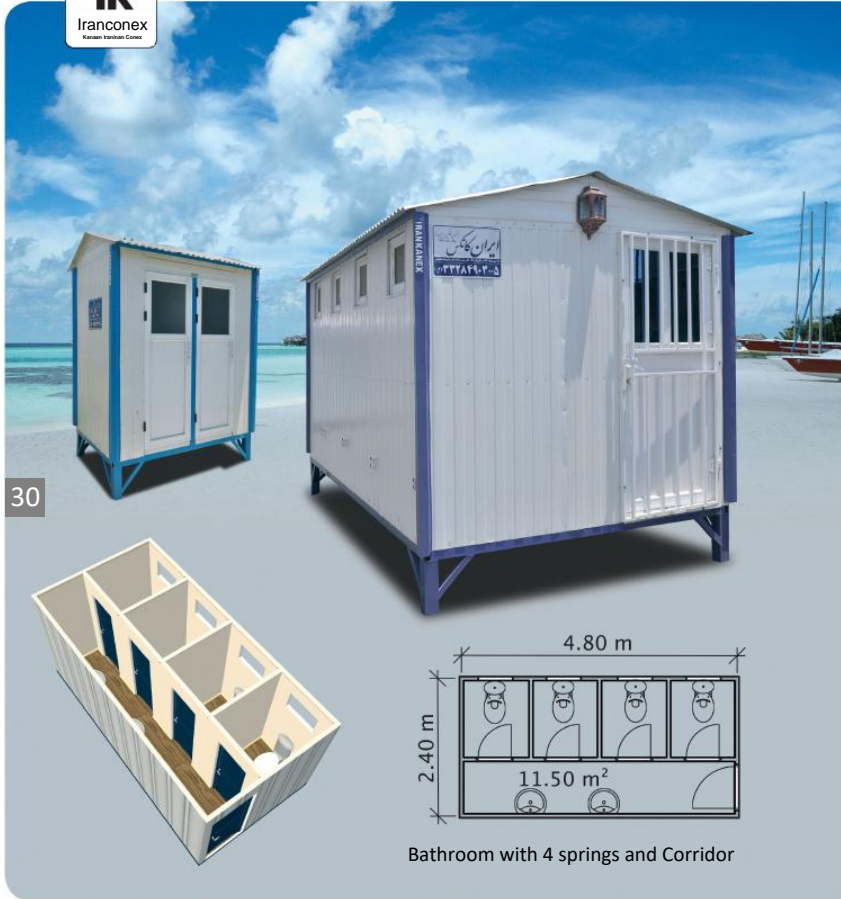
- Telephonic or scientific shower with first-class lever valves for the bathroom.
- If you need interior decoration or equipment such as bed, library, wardrobe, table and chair, we announce our readiness.

The rotation of the earth is like the rotation of a caravan



Mobile caravan structures can be moved with any car

Being mobile and visible with prosperous and portable facilities in every field



Bathroom with 4 springs and Corridor

Size
Single spring
Double springs
3 springs
4 springs
5 springs
6 springs
8 springs
10 springs
12 springs

Size
Single spring
Double springs
3 springs
4 springs
5 springs
6 springs
8 springs
10 springs
12 springs

Toilets

Aramesh plan 1:

- Waterproof ceramic floor, scratch resistant and unbreakable, with a new toilet bowl. The inner cover of the body and roof is made of waterproof PVC material
- The service door is made of heavy aluminum Arak and furnace epoxy
- Lever valves and hot and cold-water piping
- All steel mesh hose
- Fiberglass vanity with Kenji base
- A mirror, a soap dish and a tissue holder
- clothes hanger
- Electric fan

Aramesh plan 2:

- Waterproof, anti-scratch and unbreakable ceramic floor
- The inner cover of the body and roof is made of waterproof PVC material
- Colored aluminum service door
- Hot and cold water taps and piping
- Kenji's vanity
- Mirror, soap dish and towel holder

Bathroom services

Aramesh Plan 1:

- The floor is made of new waterproof, anti-scratch and unbreakable ceramic
- Water way and new floor washing system
- The inner cover of the body and roof is made of waterproof PVC material
- The service door is made of heavy aluminum Arak and furnace epoxy
- Lever valves and hot and cold-water piping
- First-class telephone and shower
- Clothes hanger, soap and shampoo dishes
- Electric fan

Aramesh plan 2:

- Waterproof, anti-scratch and unbreakable ceramic floor
- The inner cover of the body and roof is made of waterproof PVC material
- Colored aluminum service door
- Cold and hot water taps and plumbing, telephone and scientific shower
- Clothes hanger, soap and shampoo dishes
- air vent



۲۵

۲۶

Quality in social environments and construction projects and public uses

Toilets and bathrooms for all projects with complete and portable equipment and according to the number of people



Prefabricated Houses and Villas

Aramesh Plan1:

- Use of UPVC doors and windows (top brands in the country).
- Two, three or four windows of 11 meters and above, along with Lordrape curtains and guards. (According to the customer's desire).
- The possibility of implementing the inner cover of the body and the roof from waterproof fiberglass.
- MDF or waterproof PVC in different designs.
- The possibility of installing metal protection for window and cooler doors.
- The possibility of installing an anti-theft door.
- The possibility of implementing and installing solar panels to generate electricity.
- The possibility of separating the room within 2.5 and 3 meters and above for each design.

Dimensions: From 20 square meters and above and according to the designed plan and requested specifications.

Bathroom equipment:

- Anti-scratch and unbreakable waterproof ceramic floor with new toilet bowl.
- Toilet walls made of waterproof PVC.
- The service door is made of heavy aluminum Arak and furnace epoxy or UPVC.
- Hot and cold-water piping, lever valves and all steel mesh hose.
- Kenji pedestal vanity with mirror, soap holder, towel holder.
- Electric fan.

Kitchen Equipment:

- Open with One up to two meters size.
- First class sink and cabinet.
- Hot and cold-water piping, lever valves.
- Cabinet's watering can.
- Net for placing dishes.
- Dish washing liquid container.
- Table gas and hood.

Other equipment:

If you need decoration with equipment such as: bed, library, wardrobe, table and chair, we announce our readiness.

Earthquake-proof duplex villa with all amenities and moveable



Prefabricated Houses and Villas



Do you know that prefabricated villas do not need a permit?

Prefab villas that can be moved and installed on site



Prefab villas from 20 meters to 200 meters with amenities and equipment in every region of Iran

Modern villas with full options in any area with any weather

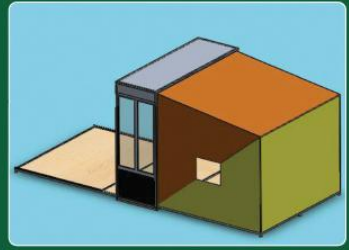
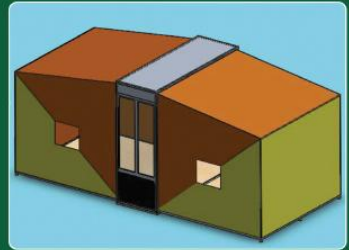


Order from you design, offer, build and deliver from us

New villas in projects and complexes with various applications



Dear managers,
Do you know that 30 new portable structures are transported with only a trailer?



For the use of the Red Crescent - Emergency - Police Force mobile structures
In use and reassembly for different places.

Use it on any way, it's yours to enjoy

Office and Engineering Structure with any application



77

Mobile police convoy with the use of road and emergency transportation of Red Crescent stores and fast food.



78

ATM Structure



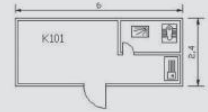
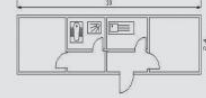
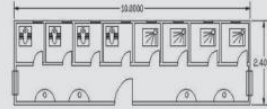
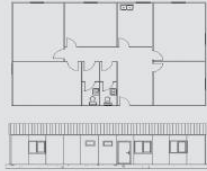
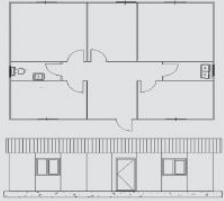
79

Semi-crescent Conex, store and management



80

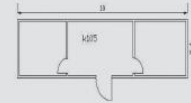
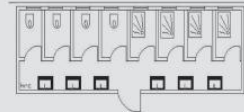
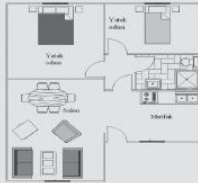
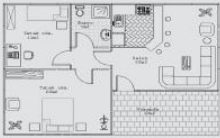
Examples of executed plans



1

2

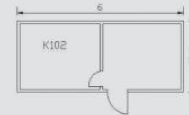
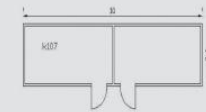
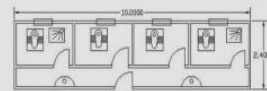
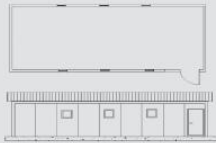
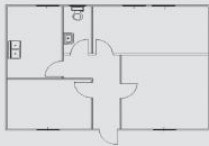
3



4

5

6



7

8

9

Our proposed design and our new ideas and your choice.